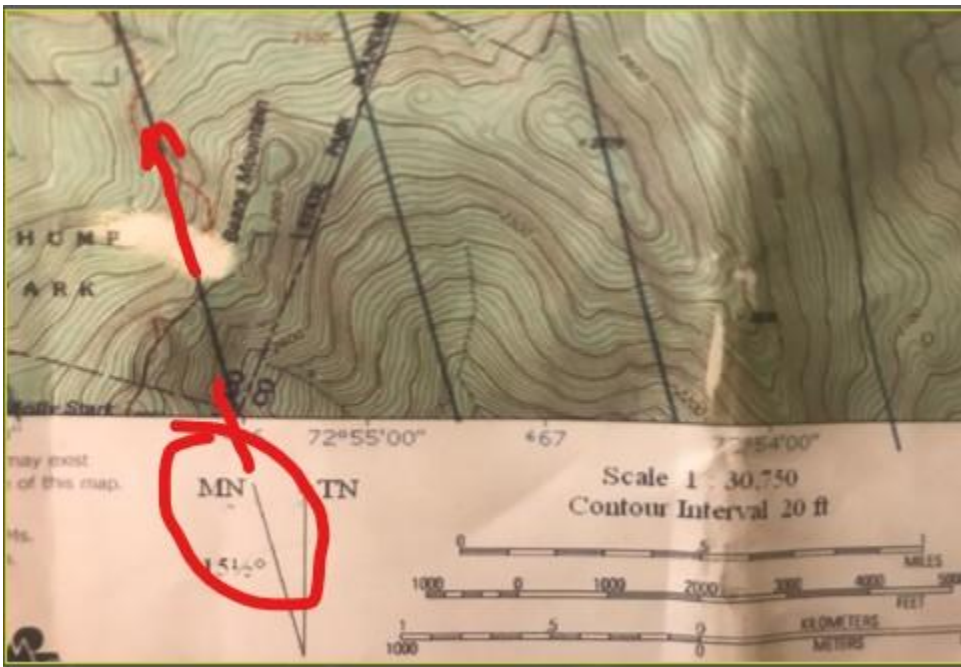
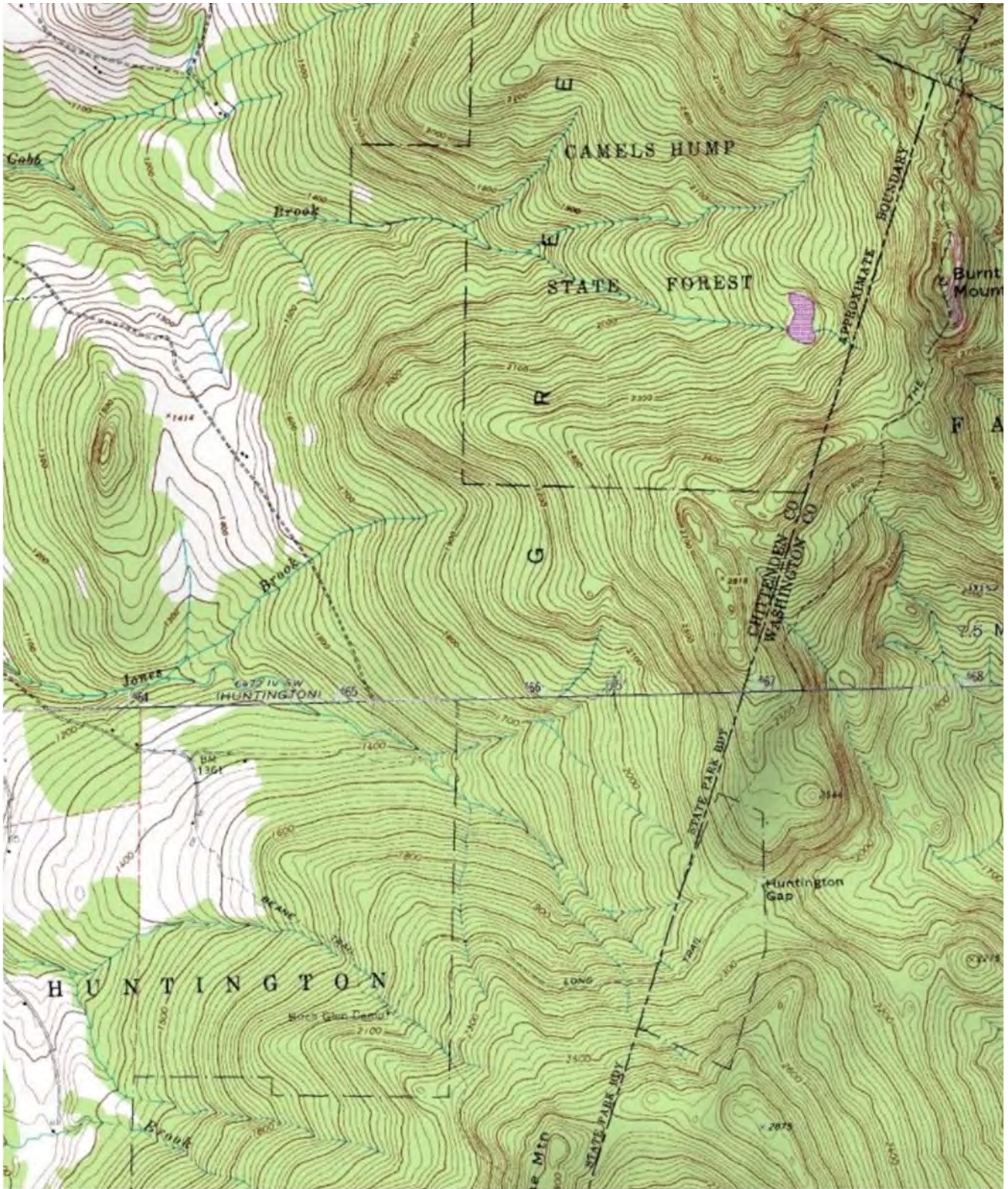


Snow Sense and Planning - Preparing the Map

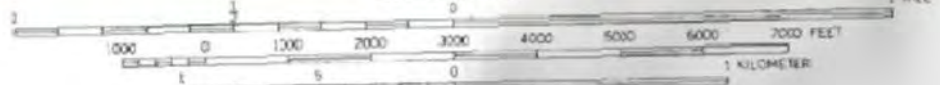
Drawing parallel declination lines on your map before use has a great many benefits, which I will go over with you in detail in our next session. Spending a little time preparing the map will make navigation a great deal easier. Here's how:

1. You will need a fine point pen and a ruler or relatively narrow straight edge with 2 parallel sides.
2. Find the legend at the bottom of the map, then go to the graphic that represents the direction of True North which is a line with a star symbol at the end ★. A second line to the left will point toward the letters MN! This is the direction of Magnetic North, and the line is known as the Declination Line.
3. To prepare the map, line your ruler edge up with the Declination Line and draw a line as far as you can up the map.
4. Once you have drawn the first line, leave your ruler in line with the Declination Line and draw a second line parallel to the first line. Repeat this process to draw parallel Declination Lines across the entire map. See the image below!





SCALE 1:24 000



CONTOUR INTERVAL 20 FEET
DATUM IS MEAN SEA LEVEL

